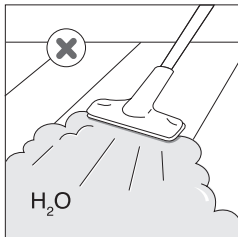
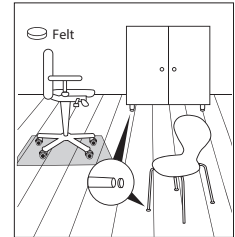


The surface of your parqwood is factory-treated to prevent dirt and dust from penetrating the wood. Maintenance begins with good prevention: place brush mats outside and inside the house to trap gravel and sand, and place felt pads under furniture and chairs to prevent scratches. For effective maintenance of your parqwood, follow these steps: thoroughly dust with a vacuum equipped with a special parquet brush or a fringed broom. Also, use a floor protector under castor chairs.



**NEVER CLEAN YOUR PARQWOOD WITH EXCESSIVE WATER AND NEVER ALLOW STANDING WATER. WRING OUT YOUR MOP, CLOTHS, OR SPONGE BROOM SEVERAL TIMES. DO NOT USE STEAM CLEANERS.**

### Liquid Spills

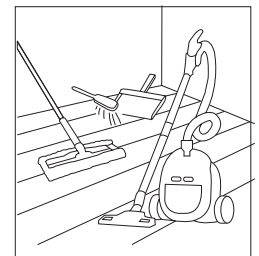
Liquids should be removed from the parqwood as quickly as possible to prevent stains and wood swelling.

### Grease Residue Removal

The more you maintain the surface of the parqwood, the fewer residues there will be. If residues remain on the surface, contact BerryAlloc's technical service.

### PRACTICAL TIPS:

Use a microfiber mop to avoid the buildup of excess cleaning product, which can result in uneven shine or glossiness on the parqwood surface. Before use, thoroughly shake cleaning products to ensure proper mixing and effectiveness. After cleaning your wooden floor, rinse the cleaning equipment with warm clear water to remove any residual cleaning product and prevent cross-contamination during future use.



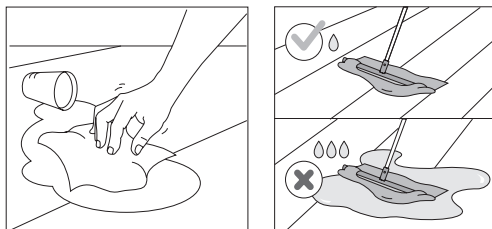
### PARQWOOD MAINTENANCE

Frequency	Recommended Products	Application
Daily Maintenance		Dust with a microfiber broom or vacuum. For stains, use a clean, dry cloth/mop.
Routine Maintenance	<b>BerryAlloc Cleaner (63002726):</b> Degreases and cleans surfaces without leaving traces	Dilute with water (100ml in 5L of warm water) Use a microfiber broom, sponge broom, or damp mop.
Occasional Maintenance	<b>Metallic Renovator (63002727) by BerryAlloc:</b> forms a protective film ensuring additional protection and long-lasting enhancement of satin or matte varnished wooden floors. Provides additional protection to chamfers. Applied during initial maintenance or 1 to 2 times a year as needed.	The parquet must be dry, clean, and non-greasy. Use BerryAlloc cleaner with non-dripping equipment. For renovation, varnish must have dried and hardened for a minimum of 10 days. Apply BerryAlloc Metallic Renovator in 1 or 2 coats with a microfiber broom, sponge broom, or well-wrung mop. Allow 1 hour drying time between each coat.
Deep Cleaning	<b>Blanchon Stripper Degreaser:</b> Allows intensive cleaning, removes stains resistant to regular cleaners such as black marks, grease accumulations. To be used every 5 to 10 applications of metallic rennovator to remove its old layers.	Dilute with water: Intensive cleaning: Dilute 2 glasses in 5L of hot water, wash with a broom, then rinse twice with clear water. Metallic stripping: Dilute 4 glasses in 5L of hot water, wash with a broom, then rinse twice with clear water. Use a microfiber broom or well-wrung mop. Remove dirt by vacuuming or wiping with a squeegee, then with a microfiber cloth.

Stains	Remove with
Blood	Well-wrung cloth
Coffee, tea, chocolate, juice, milk, wine, beverages, grease	Well-wrung cloth, warm water, and synthetic detergent in small quantity
Rubber, oil, tar, wax, soot, nail polish, lipstick, printing ink, colored pencil, chalk, paint denatured	Denatured alcohol/white spirit/acetone (these solvents should not be used on V-grooves!)
Candle wax, chewing gum	Let harden, scrape carefully with a plastic scraper, clean the residue with acetone.

Never use steel wool or other abrasive cleaning methods on a BerryAlloc parqwood.

You can repair surface damages such as nicks or scratches using a laminate floor repair kit. Parqwood planks that are seriously damaged should be completely replaced.



## Waranty

By following the instructions mentioned above, you will extend the longevity of your parqwood and ensure the validity of the warranty. For more information, please refer to our warranty conditions.